

## Research letters

## The end of the line? Rapid depletion of a large-sized grouper through spearfishing in a subtropical marginal reef



Vinicius J. Giglio<sup>a,b,\*</sup>, Mariana G. Bender<sup>c</sup>, Cleverson Zapelini<sup>d</sup>, Carlos E.L. Ferreira<sup>b</sup>

<sup>a</sup> Programa de Pós-Graduação em Ecologia, Universidade Federal do Rio de Janeiro, Rio de Janeiro, RJ, Brazil

<sup>b</sup> Reef System Ecology and Conservation Lab, Departamento de Biologia Marinha, Universidade Federal Fluminense, Niterói, RJ, Brazil

<sup>c</sup> Departamento de Ecologia e Evolução, Universidade Federal de Santa Maria, Santa Maria, RS, Brazil

<sup>d</sup> Programa de Pós-Graduação em Ecologia e Conservação da Biodiversidade, Universidade Estadual de Santa Cruz, Ilhéus, BA, Brazil

## ARTICLE INFO

## Article history:

Received 12 November 2016

Received in revised form 22 February 2017

Accepted 9 March 2017

Available online 26 May 2017

## Keywords:

Small-scale fishing  
Atlantic goliath grouper  
Endangered species  
Marine megafauna  
Overfishing  
Apex predator

## ABSTRACT

The Atlantic goliath grouper, *Epinephelus itajara*, is a large-sized coastal fish that has been heavily overfished, mainly through spearfishing. In order to assess historical catches of the species, we interviewed spearfishers along three generations (young, middle-aged and old) in the traditional fishing village of Arraial do Cabo, southeastern Brazil. We identified a systematic and significant decline in the weight of the largest goliath grouper caught and in the number of individuals caught on the best day's catch through spearfisher generations. Today, the species is functionally extinct in the region and individuals are rarely sighted. Challenges to the conservation of goliath grouper populations throughout the Brazilian coast include the banishment of poaching as well as the support to alternative income sources through non-extractive uses, such as diving tourism.

© 2017 Associação Brasileira de Ciência Ecológica e Conservação. Published by Elsevier Editora Ltda. This is an open access article under the CC BY-NC-ND license (<http://creativecommons.org/licenses/by-nc-nd/4.0/>).

## Introduction

Among marine fishes, groupers are the most important artisanal fishing resource worldwide (Heemstra and Randall, 1993). However, twenty grouper species (12%) are currently listed under extinction risk categories and other 22 (13%) are Near Threatened with extinction worldwide according to the International Union for the Conservation of Nature – IUCN Red List of Threatened Species (Sadovy de Mitcheson et al., 2013). In addition to the threats deriving from heavy exploitation, groupers (Epinephelinae) have biological attributes that contribute to render its populations vulnerable to the effects of fishing such as long life span, slow growth, late maturation, strong site fidelity and the formation of seasonal spawning aggregations (Craig et al., 2011). As a consequence, grouper populations easily collapse when heavily fished, taking a long time to rebound (Heppell et al., 2005).

The Atlantic goliath grouper, *Epinephelus itajara*, (Lichtenstein, 1822) is the largest grouper species of the Atlantic Ocean, reaching over 2 m in length and 400 kg in weight (Bullock et al., 1992). The species has been suffering sharp population declines across its

entire range due to overfishing and habitat loss (Craig et al., 2009). Today, the goliath grouper is globally classified as Critically Endangered by the IUCN (Craig, 2011). In Brazil, the decrease in catches and lack of reliable population data led managers to establish a precautionary fishing ban in 2002. Also, in 2014 the species was listed as Critically Endangered by the Brazilian Red List of threatened species.

Spearfishing is recognised as the main cause of the collapse of the goliath grouper (Sadovy and Eklund, 1999; Gerhardinger et al., 2006). Nevertheless, the effects of spearfishing on reef fishes across longer timeframes, such as decadal periods, are poorly known for Brazilian reefs (but see Bender et al., 2014). Here, we use fishers' local ecological knowledge – LEK to investigate trends in historical spearfishing catches of goliath grouper populations in Arraial do Cabo, a fishing village in southeastern Brazil. Specifically, our aims were to assess changes in (i) the number of individuals caught over the years and (ii) the weight of individuals caught over the years. The knowledge of resource users has been widely applied to obtain historical data of marine species and populations not registered by the most conventional approaches (e.g. fisheries statistics; McClean et al., 2015). Despite the potential biases that may exist in individuals' memories related to LEK (Papworth et al., 2009), comparisons with biological surveys have shown that when data collection (e.g. interviews, questionnaires, etc.) is well-designed,

\* Corresponding author.

E-mail address: [vj.giglio@gmail.com](mailto:vj.giglio@gmail.com) (V.J. Giglio).

fishers' LEK constitute a reliable source of data (Thurstan et al., 2015).

## Material and methods

### Study area

Arraial do Cabo (22°57'57"S 42°01'40"W) is a traditional fishing village with approximately 1000 active fishers in which approximately 55 are spearfishers. Fisheries are generally multispecific and apply a variety of fishing gears, such as hook and line, gill-net, beach seine and spearfishing, with beach seine being the most traditional practice. The main fishing targets are the bluefish *Pomatomus saltatrix*, mullets (Mugilidae), jack and trevallies (Carangidae), tunas (Scombridae) and groupers (Epinephelidae). Parrotfishes (Scarinae) became a target in the early 1990s, when the collapse of large predators commenced, and these fishes are mainly captured through spearfishing (Bender et al., 2014). Since 1997, a coastal community-based marine protected area (MPA) was implemented, named Arraial do Cabo Marine Extractive Reserve – ACMER, where fishing rights are granted exclusively to local fishers.

### Data collection

Spearfishers were interviewed through semi-structured questionnaires, based on questions used by Saenz-Arroyo et al. (2005). Specifically, we asked three questions: (1) Fishers' age; (2) the weight of the largest goliath grouper ever caught and the year in which that catch was made; (3) the largest number of individuals caught in a single day and the year of such large catch. Prior to each interview, we clearly explained the objectives of our research, highlighting that the interviewee, as well as the data informed, would remain anonymous. This avoids the potential bias that could arise due to the mistrust of fishers in the use of the data and knowledge by researchers (Thurstan et al., 2015).

### Data analysis

Respondents were categorized into three groups with ages ranging through three generations: young (15–30 years), middle-aged (31–54 years) and old ( $\geq 55$  years). A polynomial regression was fitted to verify the relationship among weight of the largest goliath grouper ever caught and greater days' catch along the years. To compare the largest individual ever caught and greater days' catch according to spearfishers' generation, we used the nonparametric ANOVA (Kruskal–Wallis test) since the response distribution was non-normal and data was nonparametric. A post-hoc test was conducted using Dunn's test – package dunn.test (Dinno, 2017).

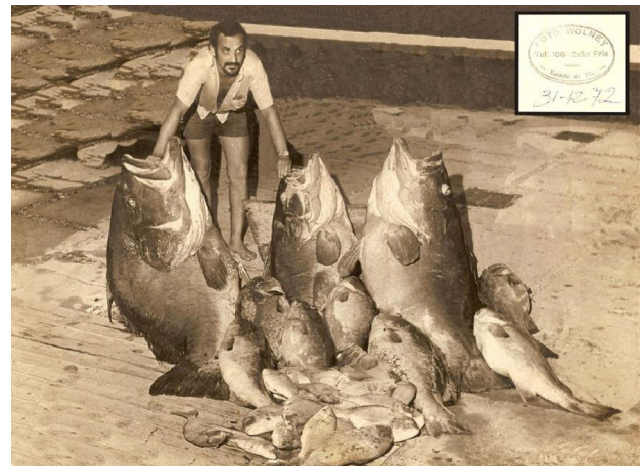


Fig. 1. Spearfishing catches in a single day at 1972 in Arraial do Cabo.

Analyses were performed using the software R (R Core Team, 2016) at a significance level of  $p < 0.05$ .

## Results

We interviewed 42 spearfishers between August 2007 and August 2008 across three different generations: young ( $n = 10$ ), middle-aged ( $n = 15$ ) and old ( $n = 17$ ), corresponding to  $\sim 75\%$  of active spearfishers in Arraial do Cabo during the time of the survey. All spearfishers reported catches of goliath grouper individuals in the past (see Fig. 1). Overall, the average weight of the largest individual ever caught was  $169 \pm 15.8$  kg ( $\pm$ SE). The smaller catch reported was an individual of 20 kg caught in 2005, and the largest weighed 400 kg, captured back in 1979. We identified a significant decline in the size of largest individual caught throughout the years (Polynomial regression  $r^2 = 0.52$ ,  $p < 0.001$ ; Fig. 2A) and across spearfishers' generations (Kruskal–Wallis  $\chi^2 = 28.72$ ,  $p < 0.001$ , Fig. 2B). Best days' catch revealed a marked decline along the years ( $r^2 = 0.36$ ,  $p < 0.001$ ; Fig. 3A) and across spearfishers' generations ( $\chi^2 = 29.1$ ,  $p < 0.002$ ; Fig. 3B).

## Discussion

By assessing spearfishers knowledge, we verified a marked decline in both the abundance and the weight of goliath grouper individuals caught in an interval of 23 years (from 1975 to 2008) in Arraial do Cabo. Historically the species was caught mainly through spearfishing in the region. Behavioral characteristics, such as

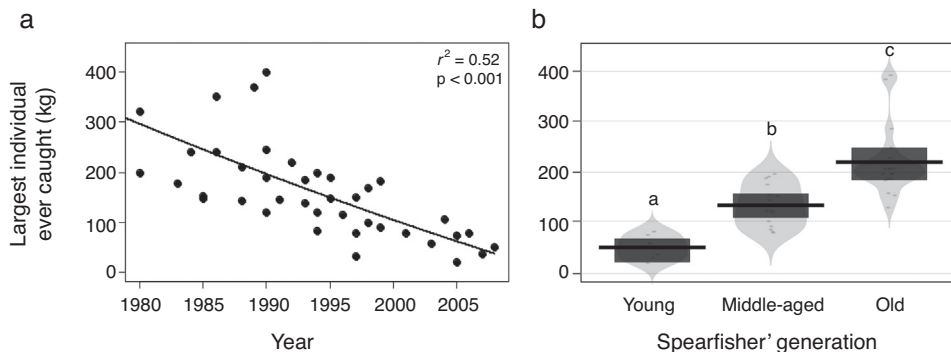
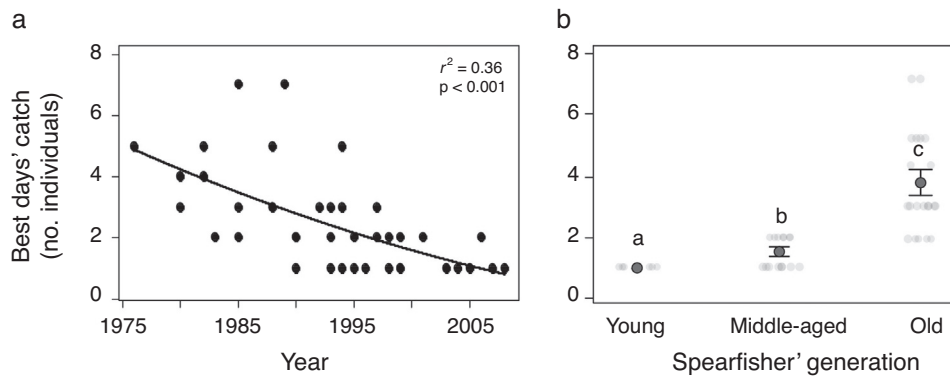


Fig. 2. Largest goliath grouper individuals caught according to (A) years and (B) spearfishers' generation in Arraial do Cabo, southeastern Brazil. Generations are defined as: young (15–30 years;  $n = 10$ ), middle-aged (31–54 years;  $n = 15$ ) and old ( $\geq 55$  years;  $n = 17$ ). In (B) points are the raw data, black line represents the average, bean is the inference interval. Different letters above piratoplots indicate significant differences (Dunn's test,  $p < 0.05$ ).



**Fig. 3.** Best day's catch of the goliath grouper according to (A) years and (B) spearfishers' generation in Arraial do Cabo, southeastern Brazil. The deviations in plots are standard errors. Different letters above barplots indicate significant differences.

inhabiting shallow waters, large size, territoriality, docile behavior (Giglio et al., 2014b) make the species susceptible to spearfishing. These characteristics allied to vulnerable life history traits has led many goliath grouper populations close to local extinction even at low fishing pressures (Sadovy and Eklund, 1999). In Brazil, surveys using fishers' knowledge showed marked declines in goliath grouper abundance, caused mainly by overfishing (Gerhardinger et al., 2006; Ferreira et al., 2014; Bender et al., 2013; Giglio et al., 2015a; Zapelini et al., in press). Despite the fishing ban established since 2002, poaching is still widely reported along the coast (Giglio et al., 2014b, 2016; Freitas et al., 2015) and there are no signs of population recovery. A challenge to the conservation of goliath grouper populations throughout the Brazilian coast is to ban poaching while encouraging alternative income sources through non-extractive use of the species.

In ACMER, even smaller-sized grouper species have been depleted, such as the dusky grouper, *Epinephelus marginatus*, the black grouper, *Mycteroperca bonaci*, the gag, *M. microlepis* and the comb grouper, *M. acutirostris* (Bender et al., 2014). The goliath grouper adds to this list and despite being under a fishing moratorium, the rare individuals found are rapidly poached by spearfishers. In fact, fish species have been continuously replaced as they become depleted and economically unviable to exploit, characterizing a “fishing down the food web” scenario (Pauly et al., 1998). Spearfishers have adjusted their perceptions regarding natural resources to a more degraded environment, suggesting the occurrence of the shifting baseline syndrome among this resource users (Pauly, 1995). Despite the existence of specific fishing regulations in the ACMER, enforcement is poor, making it difficult for managers and stakeholders to establish a sustainable use of resources. An important information to be stressed to local stakeholders is that spearfishing is a highly effective and selective fishing method. The fishes captured include many *K strategists*, those that attain large sizes, live long, mature later and present sex reversal (sequential hermaphroditism) (Morris et al., 2000; Craig et al., 2011). The combination of gear and specific life history attributes is disastrous for many reef fish species in the family Epinephelidae, with plenty of examples of stocks collapsed around the world (Sadovy de Mitcheson et al., 2013), many associated with species that form spawning aggregations like the goliath grouper. The recent collapse of the endemic Brazilian blue parrotfish, *Scarus trispinosus*, in Arraial do Cabo is the most recent example of spearfishing effects (Bender et al., 2014). Parrotfishes are caught in the region only through spearfishing, and these fishes became a target to spearfishers only in the beginning of the 1980s. Clearly, reducing fishing effort in the ACMER is essential for fish stocks to recover, but most importantly, recreational spearfishing is no longer sustainable for many species in the region, and must be controlled.

On the other hand, at more effectively enforced Brazilian no-take MPAs, goliath grouper individuals have been exploited for diving tourism, such as in the Fernando de Noronha National Marine Park – FNNMP and in the Abrolhos National Marine Park (Giglio et al., 2014a). As the species present high site fidelity, these individuals have been sighted by thousand of scuba diving visitors. Large-sized groupers are among the preferred animals to be sighted during dives (Rudd and Tupper, 2002). The occurrence of this docile, large-sized and emblematic fish adds an important attraction to these dive sites. While a large goliath grouper caught can render one or two hundred dollars to poachers, this income can be increased to tens of thousands dollars along several years through dive tourism.

Arraial do Cabo is a highly visited sun and beach destination, and encompasses one of the most visited dive sites of the Brazilian coast, attracting thousands of divers every year (Giglio et al., 2017). Today, nautical tourism is the main income source of the ACMER community, and spearfishing is no longer the main income source for the most of active practitioners. Goliath grouper can contribute to improve the local economy by providing an important attraction to diving tourism. Divers may be willing to pay more for goliath grouper encounters (Shideler and Pierce, 2016). As an example, in Brazil other species of large-sized fishes have contributed to increase the revenue of diving destinations, such as sharks in FNNMP (Garla et al., 2015) and the seasonal occurrence of manta rays in the Laje de Santos State Marine Park (Luiz et al., 2009).

### Conflicts of interest

The authors declare no conflicts of interest.

### Acknowledgements

We thank G. Machado for conducting the interviews. Conselho Nacional de Desenvolvimento Científico e Tecnológico (CNPq) for the scholarship offered to VJ Giglio and MG Bender, Coordenação de Aperfeiçoamento de Pessoal de Nível Superior (CAPES) for the scholarship offered to C Zapelini. CNPq and FAPERJ for continuing support to CEL Ferreira.

### References

- Bender, M.G., Floeter, S.R., Hanazaki, N., 2013. Do traditional fishers recognise reef fish species declines? Shifting environmental baselines in Eastern Brazil. *Fish. Manage. Ecol.* 20, 58–67.
- Bender, M.G., Machado, G.R., Silva, P.J.R., et al., 2014. Local ecological knowledge and scientific data reveal overexploitation by multigear artisanal fisheries in the Southwestern Atlantic. *PLoS ONE* 9, e110332.
- Bullock, L.H., Murphy, M.D., Godcharles, M.F., et al., 1992. Age, growth, and reproduction of jewfish *Epinephelus itajara* in the eastern Gulf of Mexico. *Fish B-NOAA* 90, 243–249.

- Craig, M.T., Graham, R.T., Torres, R.A., et al., 2009. How many species of goliath grouper are there? Cryptic genetic divergence in a threatened marine fish and the resurrection of a geopolitical species. *Endang. Species Res.* 7, 167–174.
- Craig, M.T., 2011. *Epinephelus itajara*. In: IUCN Red List of Threatened Species v. 2012.1, Available at <http://www.iucnredlist.org/details/195409/0> (accessed 15.02.17).
- Craig, M.T., Sadovy de Mitcheson, Y., Heemstra, P.C., 2011. *Groupers of the World: A Field and Market Guide*. CRC Press, Florida.
- Dinno, A., 2017. Dunn's Test of Multiple Comparisons Using Rank Sums. Available at <https://cran.r-project.org/web/packages/dunn.test/dunn.test.pdf> (accessed 15/02/2017).
- Ferreira, H.M., Reus-Strenzel, G.M., Alves, J.A., et al., 2014. Local ecological knowledge of the artisanal fishers on *Epinephelus itajara* (Lichtenstein, 1822) (Teleostei: epinephelidae) in Ilheus coast-Bahia State, Brazil. *J. Ethnobiol. Ethnomed.* 10, 51. <http://dx.doi.org/10.1186/1746-4269-10-51>.
- Freitas, M.O., Abilhoa, V., Giglio, V.J., et al., 2015. Diet and reproduction of the goliath grouper, *Epinephelus itajara* (Actinopterygii Perciformes: Serranidae), in Eastern Brazil. *Acta Ichthyol. Piscat.* 45, 1–11.
- Garla, R.C., Freitas, R.H.A., Calado, J.F., et al., 2015. Public awareness of the economic potential and threats to sharks of a tropical oceanic archipelago in the western South Atlantic. *Mar. Policy* 60, 128–133.
- Gerhardinger, L.C., Marenzi, R.C., Bertoncini, A.A., et al., 2006. Local Ecological Knowledge on the Goliath Grouper *Epinephelus itajara* (Teleostei Serranidae) in Southern Brazil. *Neotrop. Ichthyol.* 4, 441–450.
- Giglio, V.J., Adelir-Alves, J., Gerhardinger, L.C., et al., 2014a. Habitat use and abundance of goliath grouper *Epinephelus itajara* in Brazil: a participative survey. *Neotrop. Ichthyol.* 12, 803–810.
- Giglio, V.J., Bertoncini, A.A., Ferreira, B.P., et al., 2014b. Landings of goliath grouper *Epinephelus itajara*, in Brazil: despite prohibited over ten years, fishing continues. *Nat. Conserv.* 12, 118–123.
- Giglio, V.J., Luiz, O.J., Gerhardinger, L.C., 2015a. Depletion of marine megafauna and shifting baselines among artisanal fishers in eastern Brazil. *Anim. Conserv.* 18, 348–358.
- Giglio, V.J., Leite, J.R., Freitas, M.O., et al., 2016. Mapping goliath grouper aggregations in the southwestern Atlantic. *Braz. J. Oceanogr.* 64, 417–420.
- Giglio, V.J., Ternes, M.L.F., Mendes, T.C., et al., 2017. Anchoring damages to benthic organisms in a subtropical scuba dive hotspot. *J. Coast. Conserv.* 21, 311–316.
- Heemstra, P.C., Randall, J.E., 1993. *Groupers of the World (family serranidae, subfamily epinephelinae): An Annotated and Illustrated Catalogue of the Grouper, Rockcod, Hind, Coral Grouper, and Lyretail Species known to Date*. Food and Agriculture Organization of the United Nations, Rome.
- Heppell, S.S., Heppel, S.A., Read, A.J., et al., 2005. Effects of fishing on long-lived marine organisms. In: Norse, E.A., Crowder, L.B. (Eds.), *Marine Conservation Biology: The Science of Maintaining the Sea's Biodiversity*. Island Press, Washington, pp. 211–231.
- Luiz, O.J., Balboni, A.P., Kodja, G., et al., 2009. Seasonal occurrences of Manta birostris (Chondrichthyes: Mobulidae) in southeastern Brazil. *Ichthyol. Res.* 56, 96–99.
- Morris, A.V., Roberts, C.M., Hawkins, J.P., 2000. The threatened status of groupers (Epinephelinae). *Biodivers. Conserv.* 9, 919–942.
- Papworth, S., Rist, J., Coad, L., et al., 2009. Evidence for shifting baseline syndrome in conservation. *Conserv. Lett.* 2, 93–100.
- Pauly, D., 1995. Anecdotes and the shifting baseline syndrome of fisheries. *Trends Ecol. Evol.* 10, 430.
- Pauly, D., Christensen, V., Dalsgaard, J., et al., 1998. Fishing down marine food webs. *Science* 279, 860–863.
- R Core Team, 2016. R: A Language and Environment for Statistical Computing. R Foundation for Statistical Computing, Vienna, Austria, <https://www.R-project.org/>.
- Rudd, M.A., Tupper, M.H., 2002. The impact of Nassau grouper size and abundance on scuba diver site selection and MPA economics. *Coast. Manage.* 30, 133–151.
- Sadovy, Y., Eklund, A.-M., 1999. Synopsis of Biological Data on the Nassau Grouper, *Epinephelus striatus* (Bloch, 1792), and the Jewfish, *Eitajara* (Lichtenstein, 1822). NOAA Technical Report, Washington.
- Sadovy de Mitcheson, Y., Craig, M.T., Bertoncini, A.A., et al., 2013. Fishing groupers towards extinction: a global assessment of threats and extinction risks in a billion dollar fishery. *Fish Fish.* 14, 119–136.
- Saenz-Arroyo, A., Roberts, C.A., Torre, J., et al., 2005. Rapidly shifting environmental baselines among fishers of the Gulf of California. *P. Roy. Soc. B-Biol. Sci.* 22, 1957–1962.
- Shideler, G., Pierce, B., 2016. Recreational diver willingness to pay for goliath grouper encounters during the months of their spawning aggregation off eastern Florida, USA. *Ocean Coast. Manage.* 129, 36–43.
- Thurstan, R., Buckley, S.M., Ortiz, J.C., et al., 2015. Setting the record straight: assessing the reliability of retrospective accounts of change. *Conserv. Lett.* 9, 98–105.
- Zapellini C., Giglio V.J., Carvalho, R.C., et al., in press. Assessing fishing experts' knowledge to improve conservation strategies of a critically endangered grouper in southwestern Atlantic. *J. Ethnobiol.*